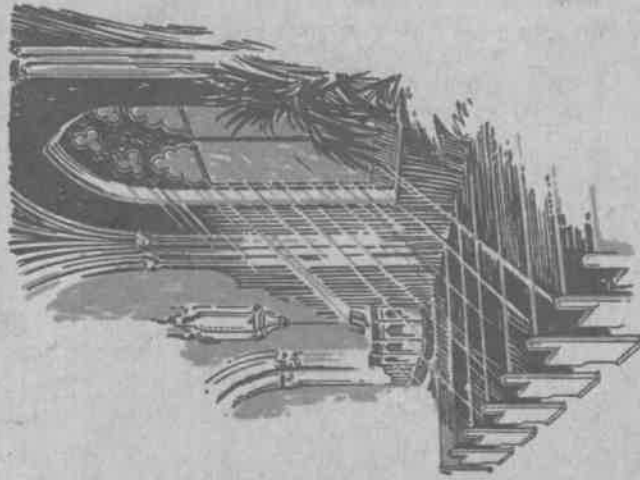


Yearbook and Church Directory of the Swansea Friends Meeting
Somerset, MA 1931-1932, William Clifford Hartnett, Pastor

915
Swansea Friends Meeting



SOMERSET, MASS.

A Proving Ground for
Modern Laundry Methods . . .

Just as motor car improvements are tested at the proving ground, so all new laundering methods are tested thoroughly before we put them into practice. We assist in maintaining the American Laundry Institute, dedicated to discovering and trying out, under actual working conditions, the best methods for each laundering operation. You profit by this protection. Let us prove it on this week's washing.

North End Laundry

Telephone 1429

Everything for Building

Cook Borden & Co., Inc.

650 DAVOL STREET

*"From Foundation to
Chimney Top"*

Telephone 1074-1075

Y E A R B O O K *and*
CHURCH DIRECTORY

of the

Swansea Friends Meeting

SOMERSET, MASS.

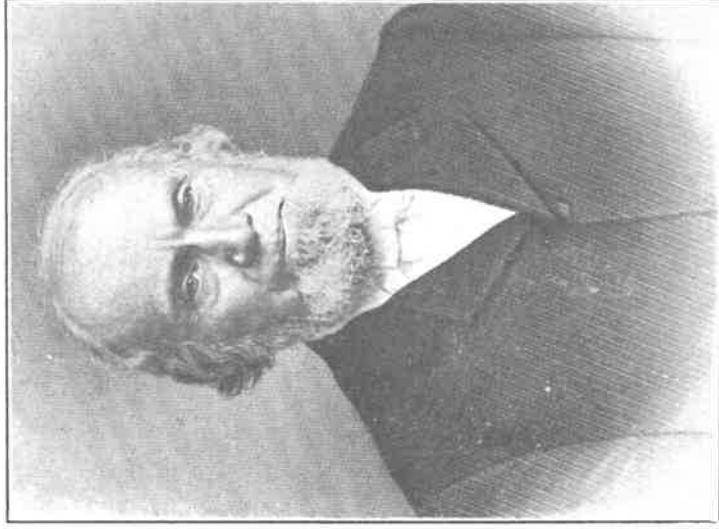
1931-1932

"The Church with a Friendly Atmosphere"



William Clifford Hartnett
Pastor

TELEPHONE 2637-M



OBADIAH CHACE (Minister 1847-1907)



FRIENDS MEETING HOUSE
Somerset, Mass.

Pastoral Message to Friends and Church Members



Dear Friends:

SWANSEA FRIENDS MEETING has had a grand history, and we believe a blessed future awaits her. The old Meeting House has stood here as a monument of Divine Grace for over two and a quarter centuries, being built in 1701. So far as we have been able to find out, she has never in all her history been closed. From her constituency have gone those who have heard and answered the call of our Lord to service in other fields. She has served her own community and served it well. The greatest testimony of her service is the fact that she still lives.

It is our sincere desire that she may be of service to her community and to friends from afar until our Lord bids us pass from service to eternal rewards. We believe it would please God for her to carry on until He comes.

THE PASTOR GLADLY OFFERS HIS SERVICES and will esteem it a great favor to be informed of any one needing the same. He will visit the aged, shut-in, sick; read and pray with them, attend funerals whenever desired, irrespective of the fact of church membership or non-church membership.

He particularly desires to meet, get acquainted with, and help, so far as he may be able, those who have no religious connection or church home. Jesus, Christ came to earth "not to be ministered unto, but to minister," and as a humble servant of His, he would serve men everywhere.

In order to properly fulfill such duties, any pastor must depend largely upon the people of his parish to keep him informed. Therefore, I would earnestly request that you make a prompt report of those persons whom you feel should have special pastoral attention. This is not "bothering" your pastor, but according him the courtesy he deserves, if he is to intelligently administer his pastoral duties.

In closing, I desire to bespeak for the various interests of Swansea Meeting, and for myself, as your pastor, your loyal co-operation in all the various details and events of our church program. This means attendance at our Sunday services, participating in week-day events, and co-operation in other activities and interests. All this will make for our mutual benefit, and the advance of our church in its great work of saving the lost.

WILLIAM C. HARTNETT

Dedication



THIS LITTLE YEAR BOOK AND MEMBERSHIP DIRECTORY is lovingly dedicated to the members, friends, and to all into whose hands it may fall, as a token of remembrance of the

230th Anniversary of the
FRIENDS MEETING
of Somerset, Mass.
August Twenty-third
Nineteen Hundred and Thirty-one

Anniversary Sermon 11:00 A. M.
Historical Sketch and Greetings 3:00 P. M.
Quaker Reminiscences 7:30 P. M.

Church Officiary



OFFICERS AND COMMITTEES FOR 1931

Clerk—Alice T. Hartnett.
Treasurer—Henry J. Harvey.
Financial Secretary—William Ferguson.
Auditors—George G. Edwards, William H. Burton.
Ushers—Henry J. Harvey, Joseph Simons, Sidney L. Hathaway, Jr., Donald T. Burton.
Committee on House and Grounds—William H. Burton, Emma B. Buffinton, Mary E. Madden, Joseph Simons.
Trustees of Parsonage—Daniel P. Shove, Bertha L. Hathaway, William H. Burton.
Music Committee—Alice T. Hartnett, Sidney L. Hathaway, Jr., Hazel A. Chace.
Flower Committee—Georgiana Ferguson, Emma B. Buffinton, Mary Simons.
Funeral Committee—Annie R. Chace, Adeline F. Chace.
Missions Committee—William C. Hartnett, Bertha L. Hathaway, Alice T. Hartnett, Elizabeth Blake.
Pastoral Committee—William C. Hartnett, Emma B. Buffinton, Caroline DeBlois, William H. Burton, George G. Edwards, Adeline F. Chace, Charles Estes, Alice T. Hartnett, Henry J. Harvey, Mary A. Harvey, Harry King, Jean Edwards, Frances Estes.
Finance Committee—Henry J. Harvey, Benjamin S. Chace, Bertha L. Hathaway, Emma B. Buffinton, Daniel P. Shove, William Ferguson.
Elders—Adeline F. Chace, Caroline DeBlois, Alice T. Hartnett, William H. Burton.
Overseers—Emma B. Buffinton, Charles Estes, Frances Estes, Henry J. Harvey, William H. Burton.

My Master



I had walked life's path with an easy tread,
Had followed where comfort and pleasure led;
And then by chance in a quiet place
I met my Master, face to face.

With station and rank and wealth for a goal,
Much thought for the body, but none for the soul,
I had entered to win in life's mad race.
When I met my Master, face to face.

I had built my castles, and reared them high,
Till their towers had pierced the blue of the sky;
I had sworn to rule with iron mace,
When I met my Master, face to face.

I met him and knew him, and blushed to see
That his eyes, full of sorrow, were fixed on me;
And I faltered and fell at his feet that day,
While my castles vanished and melted away—

Melted and vanished, and in their place
I saw naught else but my Master's face;
And I cried aloud: "Oh, make me meet
To follow the marks of thy wounded feet!"

My thought is now for the souls of men,
I have lost my life to find it again.
E'er since alone in the holy place
My Master and I stood face to face.

—Author Unknown.

Honest Now



AM I REALLY and truly interested in my church—in helping it achieve its objects and ideals—or do I just *think* I am? What do I do to *prove* my interest—that it's half as vital, for example, as I think it is?

How do I look to the man on the outside? Could he tell that I am interested by what I *do*? How do I look to *him*?

Am I a good example for anybody to follow, or do I just think I am? Or do I think about my responsibility in this connection at all?

Do I attend church services as often as I think I do? How often do I speak a word of encouragement or praise to the minister, or have a pleasant word and smile for his wife? Do I as often as I think I do?

How would the minister classify me? As interested, indifferent, cold? As a friend and helper, or just as—one of the congregation? Would he be justified by what I *do*?

Do I really give as the Lord hath prospered me, or do I just think I do? If I should add up my contributions to local church support and to missions, would they represent as large a part of my total income as I think they do?

Would a stranger think me as liberal as I think I am, even if he had all the facts of my other responsibilities?

Do I really care for missions at all? Do I really ever *deny* myself—a new suit, candy, street car rides (when walking would be better for my health)—any thing, to help forward the cause? Do I really ever *deny* myself, or do I just *think* I do?

Do I really believe it more blessed to give than to receive, or do I just think I do?

What kind of church member am I anyhow? Am I the kind I think I am, or do I just think I am?
I am going to try a little introspection along these lines.

Be A Booster



If you think *your* church the best,
Tell 'em so!

If you'd have it lead the rest,
Help it grow!

When there's anything to do,
Let them always count on you,
You'll feel good when it is through,
Don't you know?

If you're used to giving knocks,
Change your style;

Throw bouquets instead of rocks
For awhile.

Boost your pastor and your church;
Knock the knocker off his perch;
Lift the stumbler from the lurch—
With a smile!

When a stranger from afar

Comes along,
Tell him who and what you are—

Make it *strong*.

Never flatter, never bluff,
Tell the truth, for that's enough.

Be a *booster*, that's the stuff,
Don't *just belong*.

Hours of Worship and Church Calendar



| | |
|---|-------------|
| Morning Worship | 11:00 A. M. |
| Church School | 10:00 A. M. |
| Christian Endeavor and Evening Worship | 7:00 P. M. |
| Prayer Service (Every Fourth day evening) | 7:00 P. M. |
| Woman's Missionary Society (Second fourth day each month) | 2:30 P. M. |
| Service Group (First Second day in each month) | 7:30 P. M. |
| C. E. Business Meeting and Social (Second Third day each month) | 7:30 P. M. |
| Local Business Meeting (First day preceding the last second day in each month) | 12:30 P. M. |
| Monthly Meeting (Last Second day each month) | 7:45 P. M. |
| (Odd month at Somerset, even month at Fall River) | |
| Quarterly Meeting held at | 10:45 A. M. |
| (On the First Seventh day in Fifth month at Prov- idene, R. I.) | |
| (Eighth month, at Newport, R. I.) | |
| (Eleventh month, at Fall River, Mass.) | |
| Yearly Meeting (Last week in June each year) | |

Church Organizations



Woman's Missionary Society—Pres., Annie R. Chace; Vice Pres., Adeline F. Chace; Recording Secretary, Estelle J. Strauge; Corresponding Secretary, Alice T. Hartnett; Treasurer, Emma B. Buffinton.

Woman's Service Group—Pres., Eva M. Banville, Treasurer, Elizabeth Madden, Secretary, Vera Hitchborn, Chairman of Work Committee, Elizabeth Madden.

Christian Endeavor—Pres., Wm. Howard Burton, Jr., Secretary, Evelyn C. Donle, Corresponding Secretary, Evelyn C. Donle, Treasurer, Fielden Harvey, Chairman of Social Committee, Dorothy R. Banville.

Brief Historical Sketch and List of Pastors



FRIENDS MEETING HOUSE, landmark for over 230 years. The first Quaker Meeting House in South Somerset was built previous to 1701.

The old Friends Meeting House, which has stood in South Somerset for over 230 years, has a history and record that very few churches have in these New England States.

The present Meeting House is the outcome of there being several additions and alterations to the little Meeting House that was first built in 1701 on land owned by John Shaw, and then purchased by Thomas Earle.

On October 9, 1701, a committee was appointed to see about building a Meeting House at Wickapimset (now Somerset).

January 31, 1702, it was proposed at the Quarterly Meeting to collect some money towards the finishing of the Wickapimset Meeting House.

January 26, 1706, Joseph Chase and Thomas Earle, representatives to the Quarterly Meeting from the Wickapimset Meeting, report that the amount of £5-5s was due towards the Wickapimset Meeting House. In 1708 the Rhode Island Quarterly Meeting appointed the Trustees William Anthony, Thomas Hicks of Portsmouth, Richard Borden, Joseph Anthony, Jr., and Joseph Wanton of Tiverton, to purchase this piece of land and Meeting House which was then owned by Thomas Earle, being a part of the fifth lot in the third division in the great neck of Shawomett (which comprises the whole of what is now Somerset), on which stands a certain Meeting House in which the people called Quakers met for worship.

In 1735 a committee consisting of Samuel and Stephen Chase was appointed to repair the "little Meeting House," probably the same one referred to in 1701.

In 1736 a motion was brought before the Monthly Meeting to build a new Meeting House, the dimensions of which were 46 feet long, 36 feet wide, 21 feet high, the cost to be £537 or \$2599.08.

In 1742 Oliver Earle, Benjamin Buffinton and Elisha Chase were appointed a committee to build a new, or repair the old, Meeting House. They report that they cannot proceed for lack of finances, and the committee was discharged. Benjamin Buffinton and James Luther were appointed a committee to repair the old Meeting House. The cost was £11-4s which was allowed and paid.

In 1745 the subject of building a new Meeting House was again brought up. The dimensions to be 45 feet long, 30 feet wide, 18 feet high, and the computed cost was £722-10s.

Sunday School Organization Teachers and Classes



| | |
|----------------------------|-------------------------|
| Wm. H. Burton, Sr. | General Superintendent |
| Wm. H. Burton, Jr. | Assist. General Supt. |
| Gladys Chace | Secretary |
| Alice T. Hartnett | Supt. Cradle Roll |
| Georgiana Ferguson | Supt. Home Dept. |
| Fielten Harvey | Librarian |
| William L. Donle | Asst. Librarian |
| Jean Edwards | Supt. of Missions |
| Alice T. Hartnett | Asst. Supt. of Missions |
| Hazel A. Chace | Pianist |
| M. Elizabeth Madden | Asst. Pianist |
| Hazel Turner, Marian Walsh | Flower Com. |
| Ethel Gell | Supt. Primary Dept. |

In 1746 they wanted more land on which to build the Meeting House and purchased a quarter acre of land of Eber Chase. In the sixth month (June) the house was ready for the windows. In August they were in great want of money to perfect the Meeting House. In the fifth month, 1747, the house was completed at the cost of £759-19s, leaving a debt of £209-8s-3d.

In 1773 there were alterations and repairs made to the Meeting House and the Quarterly Meeting furnished £9-16s for the same.

In 1782 they finished the chamber over the "little part" (probably the same referred to in 1701) for the women to hold their Monthly Meeting, at the cost of £11-16s.

In 1803 the necessary repairs on the Meeting House was attended to; the expense was £3-9s-10d.

May 30, 1831, a committee was appointed to examine the Meeting House, make a statement of the amount of repairs necessary, the probable expense there was, and the best method of defraying the same.

July 25, 1831, the committee to repair the Meeting House reported that the roof and the south end needed new shingles, the sides and north end some repairs, also the chimneys, hearths and floors, the estimated cost to be \$250, and report to the Quarterly Meeting this information.

In the spring of 1888 or 1889 there were extensive repairs made which brought it to its present condition, which consisted in providing a Sunday School room and later the three classrooms in the other portions of the building.

For a number of years the good Quaker men and women gathered in this Meeting House and in their quiet manner worshiped. On the rising seats facing the audience would be seated the ministers and elders.

At some of the meetings perfect silence would reign, and the shaking of hands by their ministers and elders would signify that the meeting was at a close.

In this Meeting House the men sat on one side of the house and the women on the other, shutters being between them; the seats were very high-backed, and no cushions were furnished. At this time there was no singing in the Meetings, but it was introduced about 45 years ago and today is one of the pleasant features of the service.

About 25 years ago Mrs. Charles A. Chace presented the Church with a pulpit and its furnishings. The first minister on the record is Abraham Chase in 1727; Benjamin Buffinton, who followed, preached here from 1731 to 1760. Patience Brayton followed. She preached here for some time and was the first minister sent to England by Friends in this country. Stephen Slade accompanied her as far as Philadelphia by way of Long Island on horse-back. There were also the following ministers: John Chase, 1781-1824; Stephen Slade, 1784-1803; Benj. Buffinton, 1795-1829; Daniel Brayton, 1806-1836; Obadiah Chace, 1847-1907, and many others.

Frank E. Jones was the first pastor, the others all being resident-ministers. He preached from 1894 to 1901; Mead Kelsey, 1901-1905; Jesse McPherson preached about six months; George B. Evans, 1906-1910; Oscar Mostrom, 1910 to 1912; Frank E. Jones, 1912 to 1926; William C. Hartnett, the present pastor, began his ministry in 1926.

The first clerk was John Earle, 1832 to 1746. The present clerk is Alice T. Harnett. The first treasurer was Oliver Earle, 1732 to 1734. The present treasurer is Henry J. Harvey.

When the first Meeting House was built, this section of the country was called Wickapimset; later the locality was called Swansea. The Meeting House was called the Swansea Friends Meeting House, and still bears that name, although it is situated in Somerset—Somerset having been set off from Swansea in 1790.

In the rear of the Meeting House is an old Quaker cemetery, many graves being there which never have had a stone, as the old Quakers did not believe in erecting them. There are, however, many graves that have stones, bearing the names of many noted Quakers.

Church Membership Roll



The following is the list of members, active, associate and non-resident whose addresses we have, as now contained in our membership records. It is as correct as is humanly possible to make it. The Pastor will greatly appreciate corrections of any kind which should be made. We assure our friends and constituents that any possible errors or omissions are not intentional.

- Blake, Lizzie T., Bay St., Somerset, Mass.
- Brightman, Nancy W., Riverside Ave., Somerset, Mass.
- Buffinton, Emma B., Prospect St., Somerset, Mass.
- Buffinton, Arthur H., Buffington St., Somerset, Mass.
- Buffinton, Mary, Buffington St., Somerset, Mass.
- Buffinton, Jean, Buffington St., Somerset, Mass.
- Buffinton, Thomas H., Buffington St., Somerset, Mass.
- Buffinton, Phillip G., Buffington St., Somerset, Mass.
- Burton, William H., Read St., Somerset, Mass.
- Burton, Inez, Read St., Somerset, Mass.
- Burton, William H., Jr., Read St., Somerset, Mass.
- Burton, Donald T., Read St., Somerset, Mass.
- Burton, Frank R., Read St., Somerset, Mass.
- Burton, Betty Jane, Read St., Somerset, Mass.
- Chace, Adeline F., GardnersNeck Rd., S. Swansea, Mass.
- Chace, Arthur F., 153 East 66th, New York, N. Y.
- Chace, Benjamin S., Bark St., Swansea, Mass.
- Chace, Christel, Bark St., Swansea, Mass.
- Chace, Clyde, Bark St., Swansea, Mass.
- Chace, Carol, Bark St., Swansea, Mass.
- Chace, Russell, Bark St., Swansea, Mass.
- Chace, Warren O., 32 High St., Everett, Mass.
- Chace, M. Flossie, 32 High St., Everett, Mass.
- Chace, Esther F., 32 High St., Everett, Mass.
- Chace, Warren F., 32 High St., Everett, Mass.
- Chace, Annie R., Bark St., Swansea, Mass.
- Chace, William P., Warren, R. I.
- Chace, Nathan A., Lee's River Ave., Somerset, Mass.
- Chace, Ada H., Lee's River Ave., Somerset, Mass.
- Chace, Hazel A., Lee's River Ave., Somerset, Mass.
- Chace, Dorothy, Lee's River Ave., Somerset, Mass.
- Chace, Helen, Lee's River Ave., Somerset, Mass.
- Chace, Sarah S.
- Chace, William W., Swansea, Mass.
- Chace, Katherine L., Swansea, Mass.
- Chace, Walter, Swansea, Mass.
- Cowman, Thomas, Freeman St., Everett, Mass.
- Cowman, Bessie, Freeman St., Everett, Mass.
- Donle, William J., Lee's River Ave., Somerset, Mass.
- Dean, Joseph M., Riverside Ave., Somerset, Mass.
- De Blois, Caroline W., Roosevelt Ave., Somerset, Mass.
- Donle, Evelyn C., Lee's River Ave., Somerset, Mass.

LIST OF PASTORS

In the early history of this meeting they had no pastors, but had resident Ministers, who sat on the high seat at the head of the meeting. In 1894 the first Pastor was called. The Meeting has had the pastoral system ever since. The following is a list of Ministers and Pastors as far as is possible to obtain them.

Ministers

- * Abraham Chace 1727-
- * Sarah Chace 1730-
- Benjamin Buffinton 1731-1760
- * Job Chace 1733-
- Isaac Chace 1733-1750
- Theophilus Shove 1736-1796
- * Isabel Buffinton 1753-
- Hannah Chace 1764-1775
- Patience Brayton 1768-1794
- * Phillip Chace 1780-
- Jonathan Chace 1781-1824
- Stephen Slade 1784-1803
- Benjamin Buffinton 1784-1829
- * Abigail Lawton 1802-
- Daniel Brayton 1806-1836
- * Mary Buffinton 1820-
- * Mary Shove 1838-
- Obadiah Chace 1847-1907

Pastors

- Frank E. Jones 1894-1901
- Mead A. Kelsey 1901-1905
- Jesse McPherson 6 months
- George B. Evans 1906-1910
- Oscar Mostrou 1910-1912
- Frank E. Jones 1912-1926
- William C. Hartnett 1926-

* Only date given.

Church Membership Roll

Emery, Josephine, Gardner Neck Rd., Swansea, Mass.
 Emery, William H., Gardner Neck Rd., Swansea, Mass.
 Emery, Edith, Gardner Neck Rd., Swansea, Mass.
 Emery, Eleanor, Gardner Neck Rd., Swansea, Mass.
 Emery, Rachel A., Gardner Neck Rd., Swansea, Mass.
 Emery, Arthur R., Washington Ave., Somerset, Mass.
 Emery, Harold E., Gardner's Neck Rd., Swansea, Mass.
 Estes, Charles, Touisset, R. I.
 Ferguson, William, Read St., Somerset, Mass.
 Ferguson, Georgianna E., Read St., Somerset, Mass.
 Edwards, George G., Buffington St., Somerset, Mass.
 Edwards, Jean M., Buffington St., Somerset, Mass.
 Fleck, George H., Somerset Ave., Dighton, Mass.
 Fleck, Margaritta, Somerset Ave., Dighton, Mass.
 Fleck, John B. H., Somerset Ave., Dighton, Mass.
 Fleck, Ralph A., Main Road, Assonet, Mass.
 Fleck, William H. W., Somerset Ave., Dighton, Mass.
 Fleck, Frank R., R. R. No. 1, Taunton, Mass.
 Francis, Nancy H., 413 Pearce St., Fall River, Mass.
 Gaskell, Mertis V., Ocean Grove
 Gell, William, Riverside Ave., Somerset, Mass.
 Gell, Sarah V., Riverside Ave., Somerset, Mass.
 Gell, Emily, Riverside Ave., Somerset, Mass.
 Gell, William H., Riverside Ave., Somerset, Mass.
 Gell, Ethel, Riverside Ave., Somerset, Mass.
 Gell, Arthur, Riverside Ave., Somerset, Mass.
 Gell, Thomas W., Riverside Ave., Somerset, Mass.
 Hartnett, William C., Prospect St., Somerset, Mass.
 Hartnett, Alice T., Prospect St., Somerset, Mass.
 Hartnett, William C., Jr., Prospect St., Somerset, Mass.
 Harvey, Henry J., Lee's River Ave., Somerset, Mass.
 Harvey, Mary A., Lee's River Ave., Somerset, Mass.
 Harvey, Fielden, Lee's River Ave., Somerset, Mass.
 Harvey, Linval, Lee's River Ave., Somerset, Mass.
 Harvey, Donald, Lee's River Ave., Somerset, Mass.
 Hathaway, Sidney L., St. Riverside Ave., Somerset, Mass.
 Hathaway, Bertha L., Riverside Ave., Somerset, Mass.
 Hathaway, Russell W., Riverside Ave., Somerset, Mass.
 Hindle, Sheppard A., Riverside Ave., Somerset, Mass.
 Hindle, Esther, Riverside Ave., Somerset, Mass.
 Hinkle, Walter G., Riverside Ave., Somerset, Mass.
 Holt, Susannah, Riverside Ave., Somerset, Mass.
 Jilison, George S., Grandview Ave., Somerset, Mass.
 Jilison, Bertha A., Grandview Ave., Somerset, Mass.
 King, Henry S., County St., Somerset, Mass.
 King, Adeline B., County St., Somerset, Mass.
 King, Earle S., County St., Somerset, Mass.
 King, Harry P., Riverside Ave., Somerset, Mass.
 King, Elsie M., Riverside Ave., Somerset, Mass.
 King, Marjorie L., Riverside Ave., Somerset, Mass.
 King, Preston B., Riverside Ave., Somerset, Mass.

Church Membership Roll

King, Melvin H., Riverside Ave., Somerset, Mass.
 King, Adeline C., Riverside Ave., Somerset, Mass.
 Larter, Mamie, N. Adams Hospital, N. Adams, Mass.
 Lawton, Clara E., Swansea, Mass.
 Lawton, Milton E., Swansea, Mass.
 Lawton, Raymond S., Swansea, Mass.
 Libby, Ella F., Riverside Ave., Somerset, Mass.
 Madden, Mary E., County St., Somerset, Mass.
 Maxim, Sarah H.
 McMillan, Herbert L., Riverside Ave., Somerset, Mass.
 McMillan, Lillian M., Riverside Ave., Somerset, Mass.
 McMillan, Louis L., Riverside Ave., Somerset, Mass.
 McMillan, Hazel M., Riverside Ave., Somerset, Mass.
 McMillan, Mildred G., Riverside Ave., Somerset, Mass.
 Mitchell, Minnie M., Swansea, Mass.
 Moschku, N. S., 97a Berwick, Maine
 Moore, Daniel, 617 Highland Ave., Fall River, Mass.
 Moore, Eleanor, 617 Highland Ave., Fall River, Mass.
 Moore, Dorothy, 617 Highland Ave., Fall River, Mass.
 Negus, Henry L., Bark St., Swansea, Mass.
 Northup, Sarah M., 102 Ford St., Providence, R. I.
 Parkington, H. S., Fall River, Mass.
 Peabody, Abbie E., South Orange, N. J.
 Preble, Minnie O., Riverside Ave., Somerset, Mass.
 Pierce, Bertha, Somerset, Mass.
 Pittsley, Nathaniel C., Assonet, Mass.
 Pittsley, Ida M., Assonet, Mass.
 Pittsley, Armin W., Assonet, Mass.
 Pittsley, David L., Assonet, Mass.
 Sherman, J. J., 91 Prospect St., Fall River, Mass.
 Shove, Daniel P., Prospect St., Somerset, Mass.
 Shove, Elizabeth, Prospect St., Somerset, Mass.
 Simcock, Louise B., Grandview Ave., Somerset, Mass.
 Simons, Joseph, Bark St., Swansea, Mass.
 Simons, Mary B., Bark St., Swansea, Mass.
 Simons, Gilbert A., Bark St., Swansea, Mass.
 Slade, Florence E., Prospect St., Somerset, Mass.
 Slade, Winton, Prospect St., Somerset, Mass.
 Slade, Gardner, Prospect St., Somerset, Mass.
 Slade, Carl P., Prospect St., Somerset, Mass.
 Slade, Nancy V., Prospect St., Somerset, Mass.
 Smithson, Lottie C., 8 Woodland Place, Stamford, Conn.
 Sherman, Florence S., Fall River, Mass.
 Sherman, Edward, Jr., Fall River, Mass.
 Sprague, Colletta, Fall River, Mass.
 Sprague, Frank E., Fall River, Mass.
 Strange, Abiatha, Read St., Swansea, Mass.
 Strange, Estelle, Read St., Swansea, Mass.
 Swindells, Amos, Read St., Somerset, Mass.
 Tabbot, Mary K., Riverside Ave., Somerset, Mass.
 Thompson, William, Westhill Ave., Somerset, Mass.
 Williamson, Hannah, County St., Somerset, Mass.

Notes

FOR BETTER WORK CALL

S U \$ C O

CLEANSERS and DYERS

Fall River Telephone 6403

BRANCHES AT PROVIDENCE AND NEWPORT



FEDERAL - DIRECTOR
JAMES H. WARING
- Summer - J. Waring -
FALL - RIVER - MASS.

* * * * *
* * * * *
* * * * *
* * * * *
* * * * *
* * * * *
* * * * *
* * * * *
* * * * *
* * * * *
* * * * *
* * * * *
* * * * *
* * * * *
* * * * *
* * * * *
* * * * *
* * * * *
* * * * *
* * * * *

The advertisers whose advertisements appear in this Church Book made its publication possible. They deserve your patronage. Please mention the Church Book when making purchases.

Hathaway Funeral Service

FUNERAL HOME

1813 ROBESON ST., Fall River

Riverside Ave., Somerset

Phone 3040-W

Wm. C. Atwater & Co.

[INCORPORATED]

The First Retail Coal Yard in New England
to Make

COAL DUSTLESS

Phone 7920

COAL CORNER

Second and Pocasset Sts.

Omerod's Milk

FROM SELECTED HERDS

Pasteurized

Telephone 2651-M

6 Reasons *Why* you should cook with *Gas*—

- 1.—IT'S QUICK!
- 2.—CLEAN!
- 3.—DEPENDABLE!
- 4.—EASY!
- 5.—CONTROLLABLE!
- 6.—ECONOMICAL!

Fall River Gas Works Company

MacKENZIE & WINSLOW, Inc.

GRAIN - LUMBER - CEMENT

Phone 7300

FRED S. CLARNER

HARDWARE

Paints, Seeds and Bulbs, Auto, Electrical
and Poultry Supplies

Phone 322

Somerset, Mass.

Compliments of

HAPPY JOE'S ICE CREAM

and

SOMERSET ICE COMPANY

(A. MARCHAND, Prop.)

CROSS & SONS

Florists

Store
417 S. MAIN ST., Fall River
Phone 4193-W

Greenhouses
POTTERSVILLE
Phone 4193-R

BUY FURNITURE OF KNOWN QUALITY

— On Sale At —

MASON FURNITURE CO.

132-146 SECOND ST.

BRIDGE MOTOR SALES

for 20-year-old transportation



SALES & SERVICE

Pleasure Cars and Trucks

Pottersville

Massachusetts

KAPLAN BROS.

Agents for the Karpen Parlor Furniture, Karpen Mattress,
Sellers Kitchen Cabinets, A B C Washing Machine
Others Too Numerous to Mention
Also Chickering, Mason, Hamlin, Knabe Pianos
All Leading Radios

SIX STORES

Fall River and New Bedford

— MUTUAL — SAVINGS BANKS



Four in Fall River



Fall River Savings Bank

Citizens Savings Bank

Fall River Five Cents Savings Bank

Union Savings Bank



CREATED BY LAW to receive and care
for the savings of the People.

DIRECTED BY LAW to invest these
deposits in securities of known safety.

FORBIDDEN BY LAW to engage in
any kind of Commercial business.

UNDER THE LAW owned solely by
their depositors.



*Your Money Is Safe in a Mutual
Savings Bank*

"Progressive Service"

Phone 5719

ERNEST G. HAYES

Authorized Sales and Service



Automobiles

Ford Parts and
Accessories

Unexcelled Repair Work

SWANSEA

MASSACHUSETTS

*From all parts of the city
our customers are saying . . .*

"My clothes were ironed beautifully."
"My clothes were washed as white as snow."
"I never saw a better finish on napkins
and tablecloths."
"What a soothing, soft, silky feel the
sheets and pillow cases have!"

YOU CAN HAVE THE SAME EXPERIENCE

BY CALLING Telephone 1400

IDEAL LAUNDRY